



**LOCKOUT PROCEDURE**

**Air Compressor #35** ID#: LP1031  
EQ#: 200107



**LOCATION:** Ann Arbor Site: Maintenance shop

**SCOPE/USE:** This Lockout procedure is required whenever machine guards or other safety devices are removed or bypassed or any hazardous exposure to a point of operation or an associated danger zone takes place.

**PURPOSE:** This Lockout procedure will bring this equipment (or section) to a fully de energized condition.

**EQUIPMENT OVERVIEW PHOTOS**



- SPECIAL PRECAUTIONS**
- LOCKOUT LP1025
  - WAIT UNTIL ROTATION COMES TO A COMPLETE STOP BEFORE WORKING.
  - use barricade

**LOCKOUT DEVICES USED:** Padlock = 2, Ball Valve Device = 1

- LOCKOUT APPLICATION PROCESS (Apply in Order, Top to Bottom)**
1. Notify all affected personnel before starting to apply this LOCK OUT procedure.
  2. Turn off machinery using normal operating controls and standard shutdown procedures.
  3. Isolate energy sources at control points in the order shown below and apply lockout devices and locks.
  4. Locks applied to isolation points must be personally identified and in the "secured" position.
  5. Authorized personnel must maintain possession of the key(s) for each personal lock applied.
  6. Do not work under the protection of a lock you have not personally applied.
  - 7.

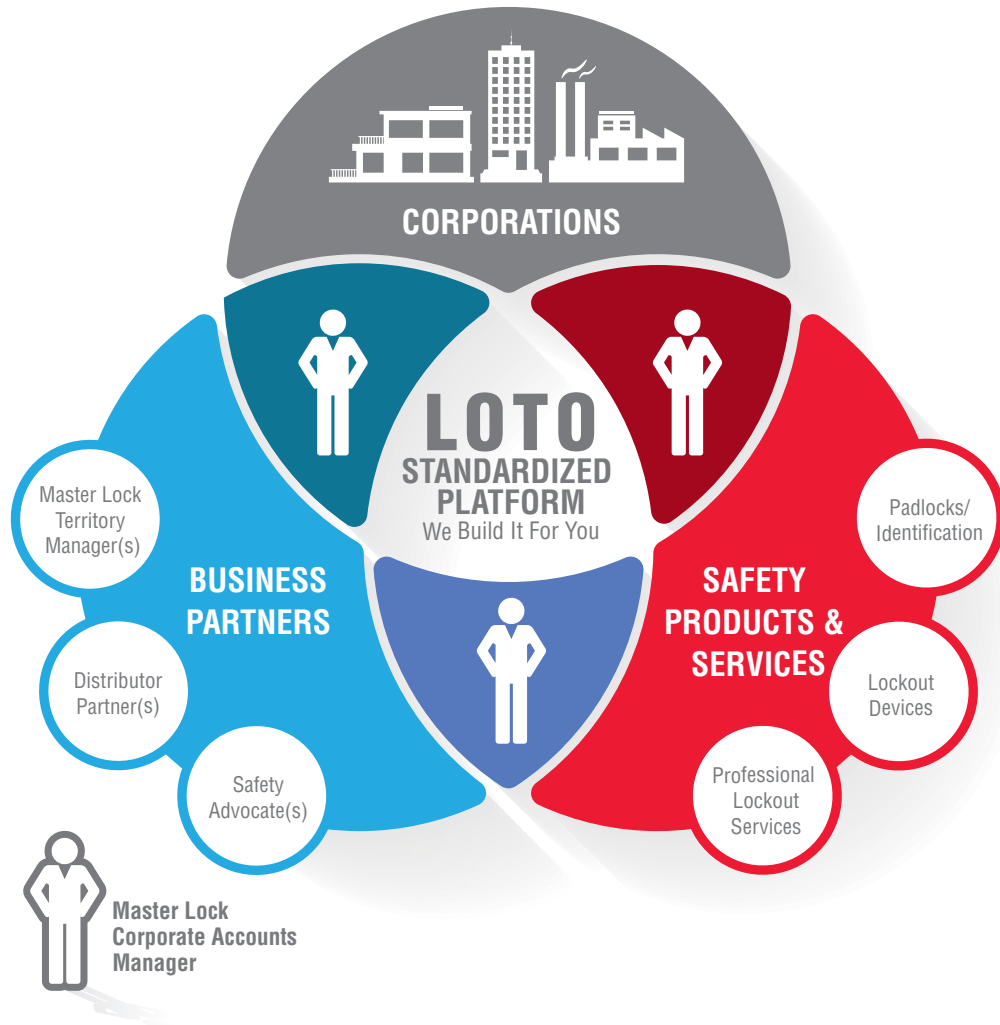
ENERGY TYPE	ENERGY ISOLATION POINT OR STEP	APPLICATION METHOD	VISUAL REFERENCE
ELECTRICAL 480V	Electrical Disconnect: Bus Switch SSA Front of machine	Move disconnect to the OFF position and apply a lockout padlock through the built-in securement hole.	
PNEUMATIC 120 PSI	Ball Valve: P01002 Left side of machine	Turn valve to CLOSED position and secure with a lockout device.	

- TESTING / VERIFICATION REQUIREMENTS** (If contact with energized parts is necessary, a qualified person must be present to verify zero energy conditions.)
1. Test for full de energization by turning normal operating controls to the on position and verifying that no machine function or movement occurs.
  2. Return all controls to the off position and verify zero energy conditions.
  3. During testing and adjustment, Lockout devices must remain on (or neutral) position and verifying necessary adjustments or repair work. Lockout devices must be removed when contact with hazardous areas is required.

# STANDARDIZED LOCKOUT MANAGEMENT SYSTEM

TOGETHER, WE MAKE WORK ENVIRONMENTS SAFER

## HOW WE WORK



## SAFETY YOU CAN COUNT ON

Nothing is more important than keeping your workers and your facility safe. Nobody understands that better than The Master Lock Company. We have focused on the development of complete lockout/tagout solutions since 1989, when OSHA first issued the regulation on the control of hazardous energy.

Today, we offer the industry's leading portfolio of safety lockout padlocks, devices, and professional services. We consistently provide reliable expert recommendations for turnkey lockout management systems, delivering effective safety solutions to companies in a variety of industries.

When it's your job to create a safe and compliant workplace, for one site or hundreds, get the confidence that comes with having a true safety partner, The Master Lock Company.

## STANDARDIZE SAFETY & PROTECT YOUR WORKERS

Our goal is to help you implement a standardized, compliant lockout/tagout management system across all your facilities, no matter where they are. This allows you to protect all your at-risk employees, in any of your facilities, with the same robust corporate-wide lockout/tagout management system. Our Corporate Accounts Manager will identify all the work needed to create a standardized corporate lockout/tagout management system in all your facilities and will serve as the project lead, maintaining required communication between all facilities and external corporate partners.

## CUSTOMIZED TO MEET YOUR NEEDS

The Master Lock Company has the products and services to solve your organization's unique lockout/tagout challenges with standardized lockout management system solutions. Our team will tailor training, equipment assessments, and the development of written policies and/or procedures to create a custom lockout system for your specific needs.

### Improve safety performance and accountability

Standardized lockout management systems reinforce positive safety habits.

### Manage risk

Strong safety habits help limit potential on-the-job risks.

### Maximize employee protection

Limiting on-the-job risks can increase employee safety and can help to prevent accidents.

### Control the cost of insured losses

Increased employee safety can prevent accidents, which helps keep insurance costs down.



## EXPERTISE YOU CAN TRUST

To build an effective and compliant safety program, you need more than product knowledge alone. We understand the intricate details of lockout/tagout procedures. Our experienced team can design your complete safety solution and help nurture a culture of safety within your organization.

### Experts

Our team includes safety industry veterans who have decades of experience in developing lockout solutions.

### Trained professionals

Our team members are well-versed in requirements of 29 CFR 1910.147 from equipment to application.



## MAKE WORK ENVIRONMENTS SAFER WITH MASTER LOCK eLOTO

Machine-specific procedures are a requirement of a compliant lockout management system, yet developing procedures that follow best-practice guidelines can be challenging and time-consuming.

Master Lock eLOTO is an easy-to-use, cloud-based software solution for writing and managing visual lockout procedures. Master Lock eLOTO is comprised of a web interface and two mobile applications:

### Master Lock | eLOTO

**Procedure Database** – Use a web browser to create, modify and print lockout procedures, and manage dates and tasks associated with audits

### eLOTO WRITER

**Writer App** – Collect data right at the machine for each lockout isolation point

### eLOTO INSPECTOR

**Inspector App** – Audit procedures and authorized personnel at the equipment location

Empower employees with the tools needed for success in safety.

## SAFETY SOLUTIONS FOR UNIQUE FACILITY NEEDS

We work hard to earn and maintain the trust of our customers by delivering on our promise of strength and reliability, while also setting new standards for design and performance. Our continued focus on understanding everyday lockout challenges and customer needs drives us to provide innovative, effective, and compliant solutions.



### Safety Padlocks

We can create padlock systems designed for each facility's unique lockout program.

#### Customization

We offer the most material, color and shackle variations in the marketplace, as well as customized laser engraving.

#### Key Charting

Master Lock provides LifeGuard™ key charting, free of charge, to ensure no unwarranted key duplication within a registered facility. Stay true to the "One Employee, One Lock, One Key" mantra. We have the ability to offer thousands of key changes to provide even the largest facilities with unique key combinations.

### Lockout Devices

Our lineup of award-winning safety lockout devices feature high-quality, universal designs that are durable and provide innovative, easy-to-use solutions for:

- Group lockout
- Electrical lockout
- Blind flange lockout
- Pneumatic lockout
- Valve lockout



www.masterlocksafety.com  
www.masterlock.com

Master Lock Company LLC, Milwaukee, WI 53154 U.S.A. | 800-308-9244  
Master Lock Canada, Mississauga, Ontario L5L 5Z9 | 800-227-9599  
© 2021 Master Lock Company LLC | All Rights Reserved  
7000-0608 MC 02/21

### Identification

We offer an assortment of OSHA-compliant safety identification products.

- Tags
- Padlock ID labels

### Professional Lockout Services

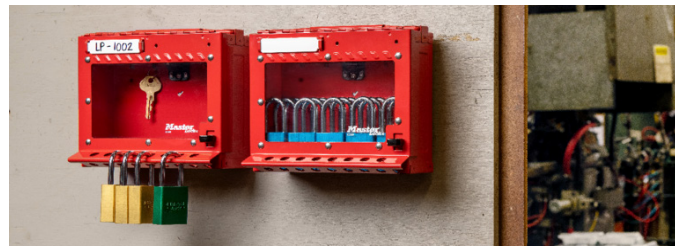
Our safety experts will conduct on-site evaluations and design a lockout/tagout program customized to meet your specific needs. Our goal is to achieve a best-in-class compliance program that provides heightened safety, practicality, and efficiency for your personnel. Services offered include:

- Written lockout compliance program development
- Specialized services for:
  - Annual lockout authorized personnel performance inspections
  - Annual lockout procedure verification inspections
  - Rapid Access to lockout equipment site assessments

### Lockout Compliance Training

A compliant lockout program requires ongoing training. The training courses we offer start with general content and are then refined to include company-specific lockout methods and staff responsibilities to help sustain your lockout program. Training materials are provided and presented by our professional instructors at your facility. Choose from the following:

- **Authorized and Affected Personnel:** Training for personnel tasked with performing lockout on equipment or for those workers affected by the application of lockout.
- **Lockout Leadership:** Select authorized personnel to be lockout leaders. They learn to serve as hands-on trainers, mentors and periodic inspectors of your lockout program.
- **Train the Trainer:** This course provides instruction to develop trainer capabilities within select instructor candidates.
- **Lockout Procedure Writer Workshop:** This workshop develops competencies in the preparation and management of equipment-specific written lockout procedures.



## WANT TO LEARN MORE?

Contact us today for a custom quote!

[Masterlocksafety.com](http://Masterlocksafety.com) • Phone: 800-604-9258